



## INSTALLATION AND MAINTENANCE INSTRUCTIONS FLOAT & THERMOSTATIC STEAM TRAPS FLT 150 S (Fabricated steel) DN100 – DN150

### GENERAL

1. These instructions must be carefully read before any work involving products supplied by VALSTEAM ADCA ENGINEERING S.A. is undertaken.
2. The installation procedure is a critical stage in a life of a float trap and care should be taken to avoid damage to the float trap or equipment.

### Warning!

- At start up, the presence of small particles in the water (dirt, scale, weld splatters, etc) may cause an imperfect closure of the seat. If this occurs, proceed to an accurate cleaning.
- Do not touch the equipment without appropriate protection during working operation because it may conduct heat if the used fluid is at high temperature.
- Before starting maintenance be sure that the equipment is not pressurized or hot.
- The equipments must be used within the working temperature and pressure limits laid down for them, otherwise they may fail (refer to nameplate and/or IS- Information Sheet).
- Do not remove the nameplate attached to the equipment. Serial number and other useful information is stamped on it.

### INSTALLATION

1. Before to install remove plastic covers placed on flanges or connection ends. The equipment has an arrow or Inlet/Outlet designations. Be sure that it will be installed on the appropriate direction.
2. Install the steam trap in the point of the system, where the condensate tends to collect. An ADCA strainer should be installed upstream of the trap.

BODY LIMITING CONDITIONS			
FLANGED PN 16 / ANSI 150 *	FLANGED PN 10	FLANGED PN 6	RELATED TEMP.
ALLOW. PRES.	ALLOW. PRES.	ALLOW. PRES.	
16 bar	10 bar	6 bar	50 °C
14,8 bar	9,2 bar	5,5 bar	100 °C
13,3 bar	8,3 bar	5 bar	200 °C
12,1 bar	7,6 bar	4,5 bar	250 °C

MAX. DIFFERENTIAL PRESSURE	
FLT150 S	12 bar

PMO - Max. operating pressure      12 bar                      \* According to      EN1092-  
 TMO - Max. operating temperature    250 °C                      1:2007  
 Minimum operating temp.: 20°C

### Installation area requirements:

- The installation area should have easy access and provide enough space for maintenance and removing operations.
- The installation area should have the necessary firing system to prevent damage of the equipment due to over temperature/pressure cause by fire.

## MAINTENANCE

1. We recommend that the float steam traps are serviced as necessary. Steam traps should be checked periodically (at least yearly), to verify that they are operating correctly and to clean the internal parts and screen (if any).
2. When reassembling make sure that all gasket faces are clean and always use a new gasket. Tighten cover bolts uniformly in a diagonal sequence.
3. For further information refer to the relevant FLT150S brochure or consult our Sales Office.

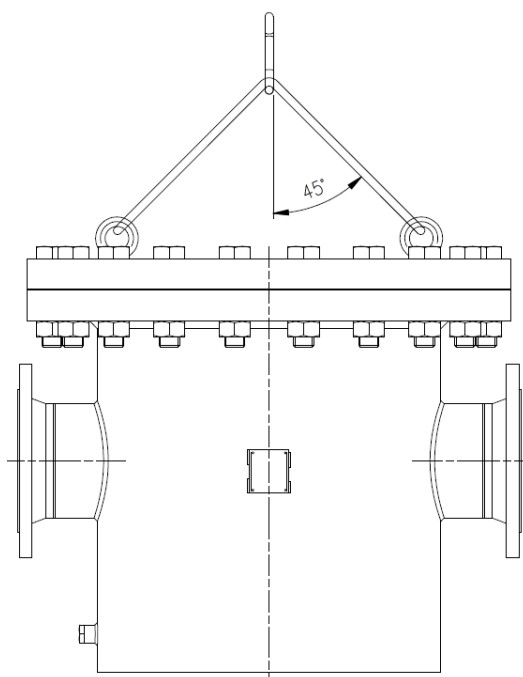
### CE Marking:

This product has been designed for use on water and steam which are in Group 2 of the European Pressure Equipment Directive 97/23/EC and it comply with those requirements. The product carries the CE mark when falling in category 2 and 3.

CE MARKING (PED - European Directive 97/23/EC)	
Rated PN 6	Category
FLT150S-TW DN100 - DN150	2 (CE Marked)
Rated PN 10	Category
FLT150S-TW DN100 - DN150	2 (CE Marked)
Rated PN 16	Category
FLT150S-TW DN100 - DN150	3 (CE Marked)

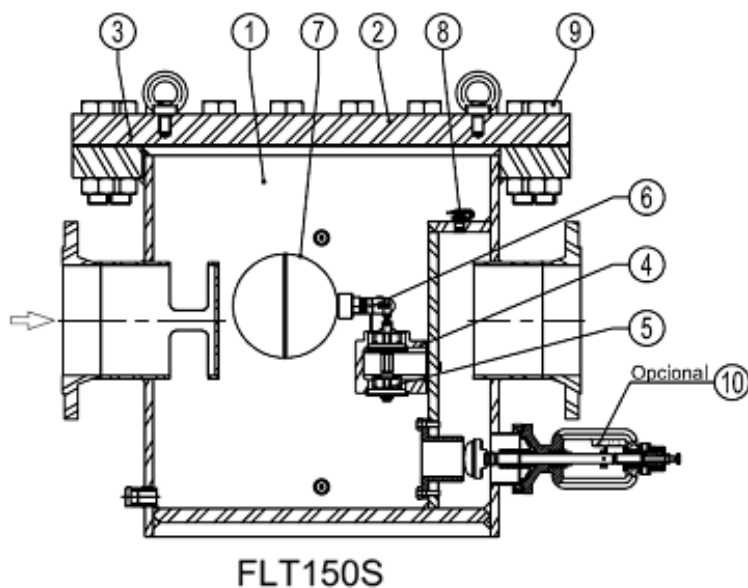
## MOVIMENTATION

When moving the FLT150S, you must have especial attention to how it is transported. Cables must form an angle equal or less than  $45^{\circ}$ , so that the load on the lifting eye bolt is reduced.



PARTS LIST FOR FLT150S, DN100-DN150

Designation	SizeTrap	Pos.Nr.	Qty.
Valve, seat, float & gasket	DN100-150	3, 4, 5, 6, 7	1 Set
Float & gasket	DN100-150	3, 7	1 Set
Air vent & gasket	DN100-150	3, 8	1 Set



ATTENTION

- LOSS OF WARRANTY: Total or partial disregard of above instructions involves loss of any right to warranty.